

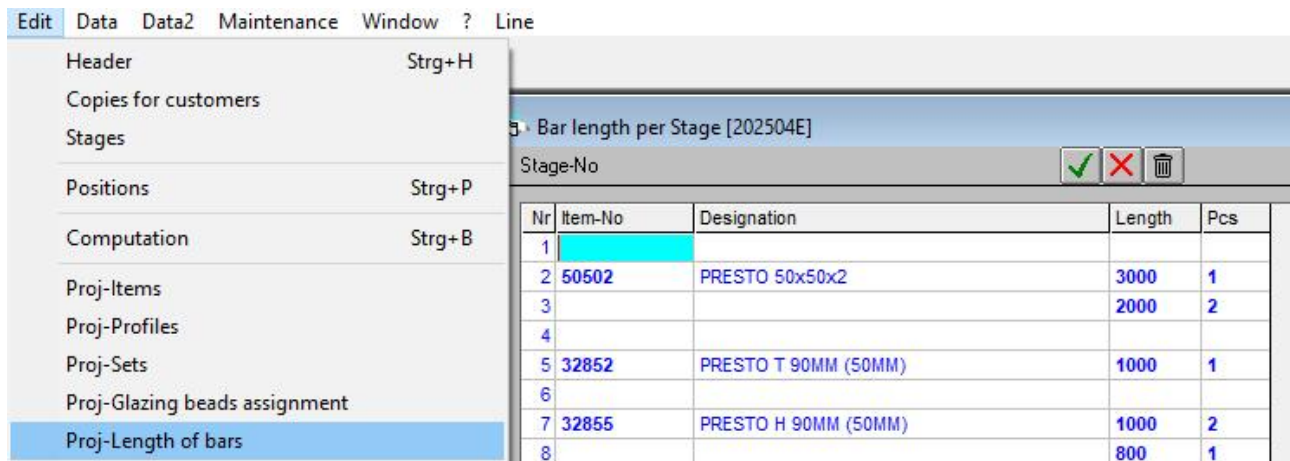
# Update 2025

(Programm-Version 25.1.1)

## 1. Fixed lengths/remaining pieces per project

There is a new menu item "Edit/Obj fixed lengths".

This allows you to create fixed lengths and remnants for a project



Example:

32852	PRESTO T 90MM (50MM)	2 -	960,0  ==	01 SH1 5
		2 -	710,0  ==	01 SH2 6
32855	PRESTO H 90MM (50MM)	2 -	710,0  ==	01 DD2 10
		2 -	960,0  ==	01 DD1 14

These lengths are then used preferentially during optimization.

32852	PRESTO T 90MM (50MM)	3,3 lm	10,5 kg	=
	2 Pce 960,0 mm -  ==	2*01		
	2 Pce 710,0 mm -  ==	2*01		
1x1000	1 * 960,0  =		R: 30	008
1x6000	1 * 960,0  =  2 * 710,0  =		R: 3590	009
2 Bar	52,3 % Cut-off	7,0 lm	22,1 kg	
32855	PRESTO H 90MM (50MM)	3,3 lm	12,1 kg	=
	2 Pce 960,0 mm -  ==	2*01		
	2 Pce 710,0 mm -  ==	2*01		
1x800	1 * 710,0  =		R: 80	010
2x1000	1 * 960,0  =		R: 30	011
1x6000	1 * 710,0  =		R: 5280	012
4 Bar	62,0 % Cut-off	8,8 lm	31,8 kg	

## 2. Grafik-Position

There is a setting in the header data that the door clearances should be dimensioned to an opening angle of 90°.

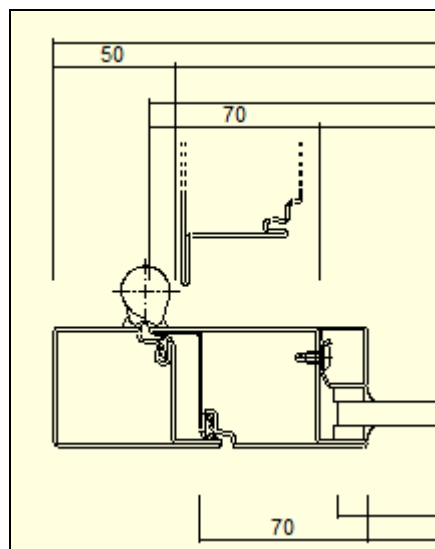
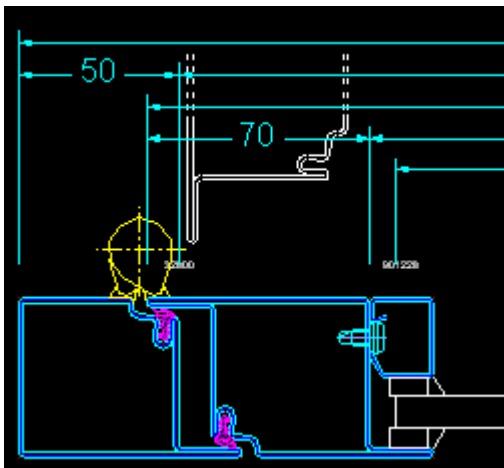
Reference clear passage width	not visible
	not visible
	90°
	180°

You can now also display a symbol of the sash profile rotated by 90° in the section. One DWG+SLD must be created for each series.

[illegible]

Implementation of the details is solved in the database depending on the system.

Result:



### 3. Calculation small (=Type 2)

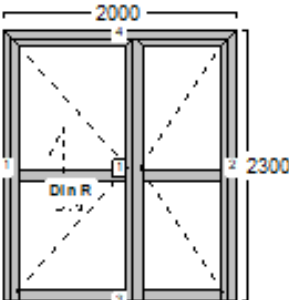

There has been an improvement, so that

- Series, dimensions, perimeter, area
- U-value
- Additional texts
- Fittings (with text code "12 or "13")
- Glass
- Further material

can be displayed. The shortening of the totals to one line can be controlled in the cal scheme. There should be space for at least 2 items on one page.

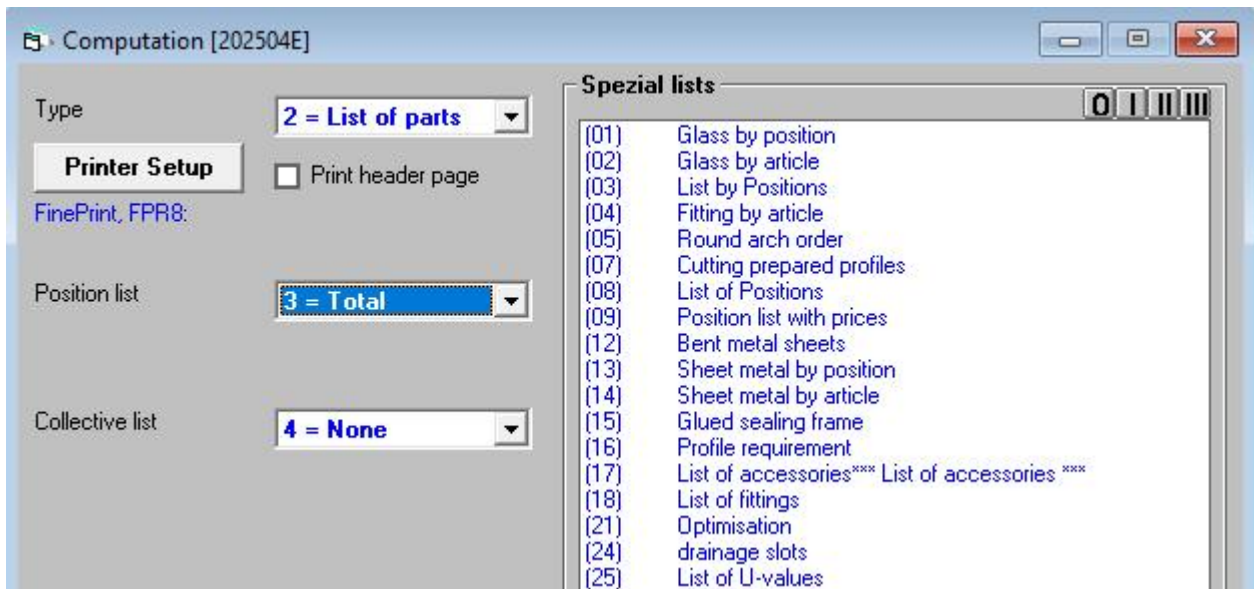
This display is activated with a file ...\\TXT\_E\\PRT\_LISC.E

If this file is not available, everything will be as before.

Pos: 01 1.1	Pce: 2	Door 2F PRE-I 2000 x 2300 mm 8.60 m 4.60 m2
		907030 ROD DIAM. 6 MORTISE LOCK 907056 LATCH TOP 907438 DRIVE BOLT LOCK 35mm 907662 WELD-ON HINGE STEEL, 4 Pce 917028 Keep 917276 SWITCH LATCH PRESTO G10 10 MM glass, 3.32 m2
Material	899 + Labor	80 = 979 x 2 Pcs = 1 958,00
Pos: 02.1 1.2.01	Pce: 1	Window UNI-RCZ 2800 x 1400 mm 8.40 m 3.92 m2 info 1
		987143 TURN TILT AND TURN FITTINGS 987600 COVER CAPS WHITE G24 24 MM glass, 3.34 m2 50502 PRESTO 50x50x2, B 30302 R-TUBE 30X30X2 SED,galvanized, H*2 Jalousie 3 400,00
Material	1 433 + Labor	= 1 433 x 1 Pcs = 1 433,00

## 4. Special lists

All reports have been revised and translated into English and French.



There is now a new list type 5 for display of a sketch

Example list (24) Drainage slots

