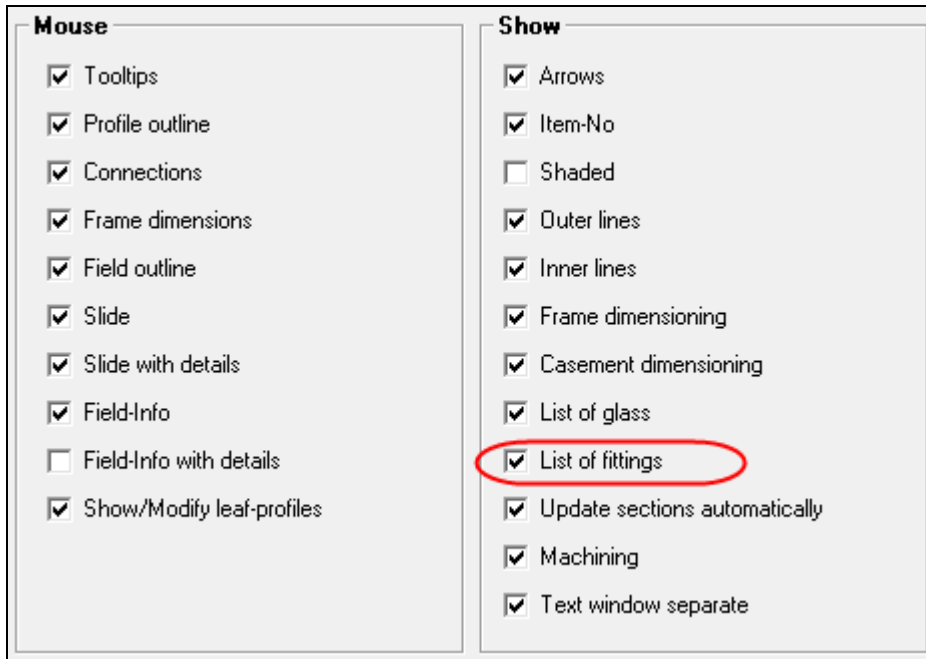


MAP Update 2026

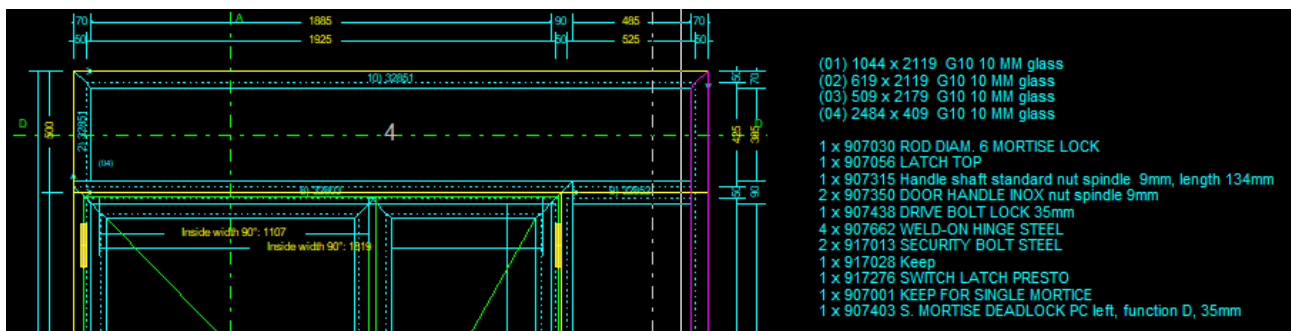
(Program-Version 26.2.1, Licence A16.x)

1. Graphics-Position

The graphics position settings menu now includes a new option called “List of fittings”

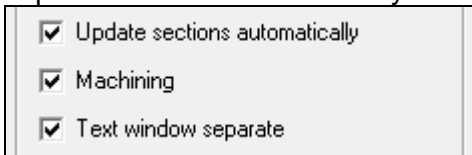


When this option is enabled, a list of fittings appears next to the elevation, similar to the detail graphic.



2. Sections in Graphic-Position

If many different sections are enabled in a complex design, performance may slow down. Previously, the only way to speed things up was to disable the option “Update sections automatically”.



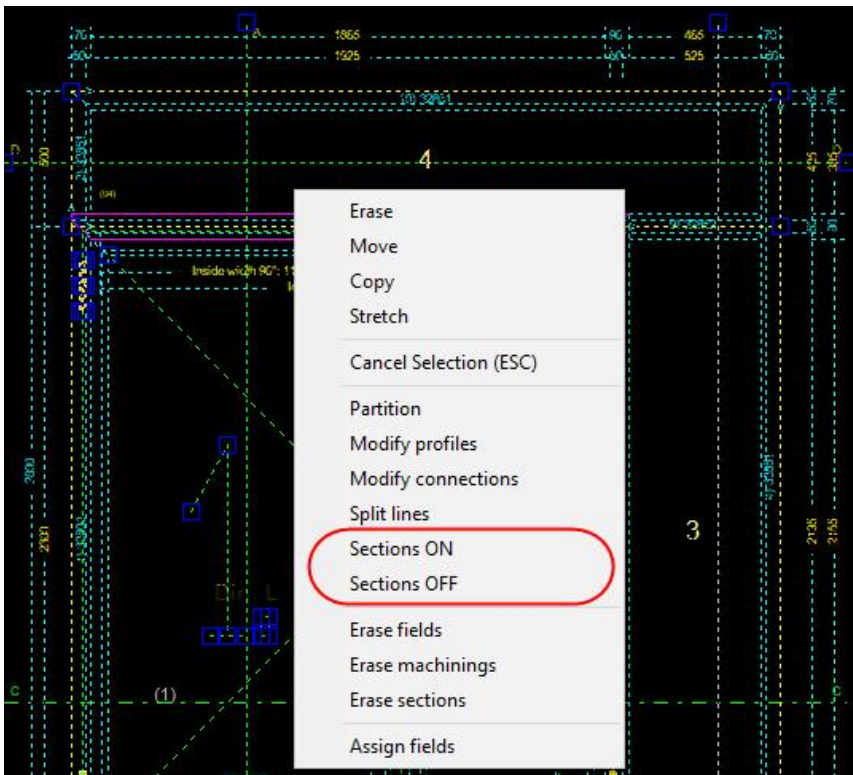
This setting applies to each workstation.

You can now also enable or disable individual sections.

Procedure:

Select area + <Right-click>

If the selected area contains section lines, the options “Turn sections on” and/or “Turn sections off” appear in the pop-up menu



Deactivated section lines are displayed in gray.

This selection is saved with the position.

Beveled elements and arched sections

Sections are now displayed in full.

3. Sound Insulation Calculation

The data is managed - similar to U-values (MfUwert.txt) - in a separate text file (MfSwert.txt).

Data maintenance is performed in an Excel file with the same name (MfSwert.xls)

Columns

- A U-value code, start of profile number
- B Glass item
- C Description/comment
- D Sound insulation value R_w [dB]
- E Correction

	A	B	C	D	E
1	U-Wert_ProfilNr	Glas-Artikel	Beschreibung	R_w [dB]	Korrektur
2	U,735*		FUEGO Light		
3		G15	Brandschutzglas 15mm	34	-2/-5
4		G18	Brandschutzglas 18mm	37	-2/-5
5					
6					
7					
8	U,32*		PRESTO		
9					
10					
11					
12					
13	U,533*		UNICO		
14		G24	2-Fach Isoglas	34	-2/-5
15		G42	3-Fach Isoglas	38	-2/-5
16					
17					

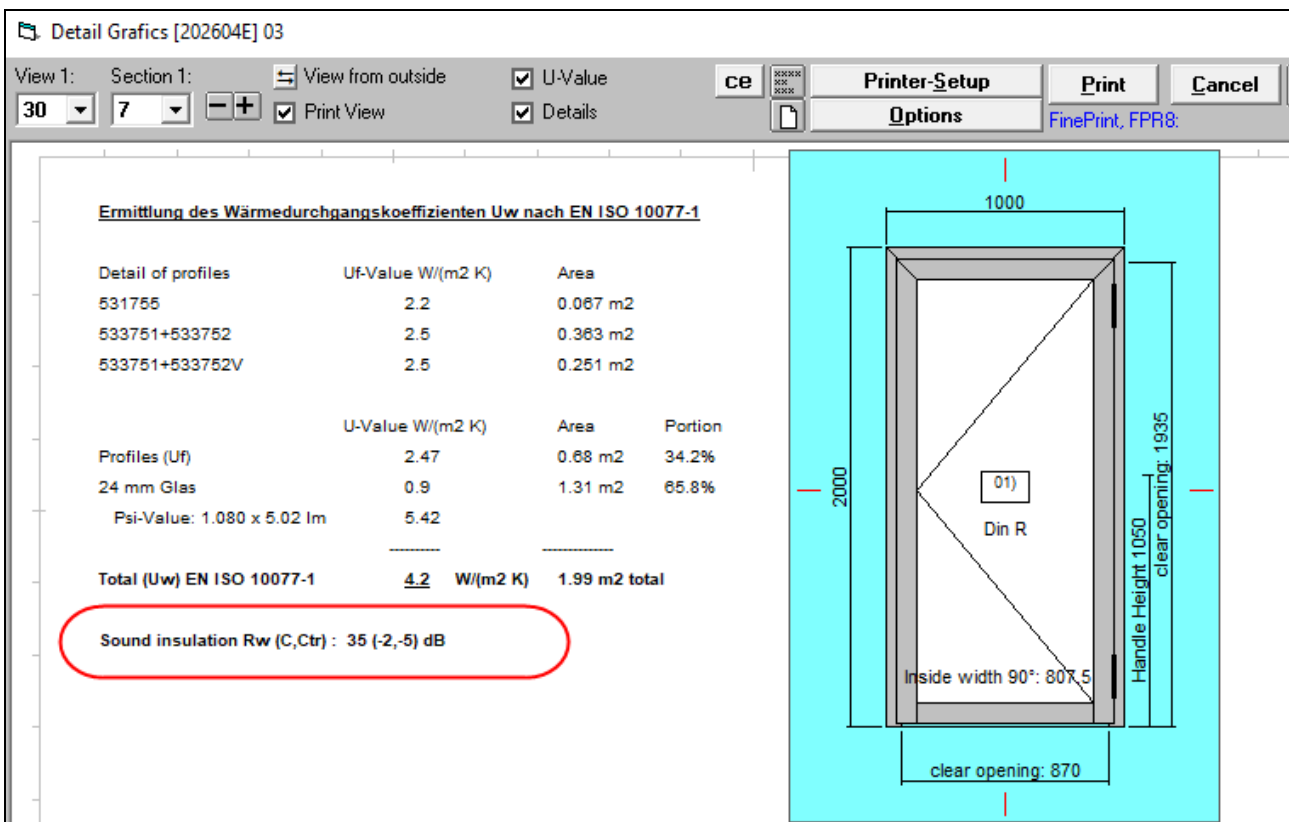
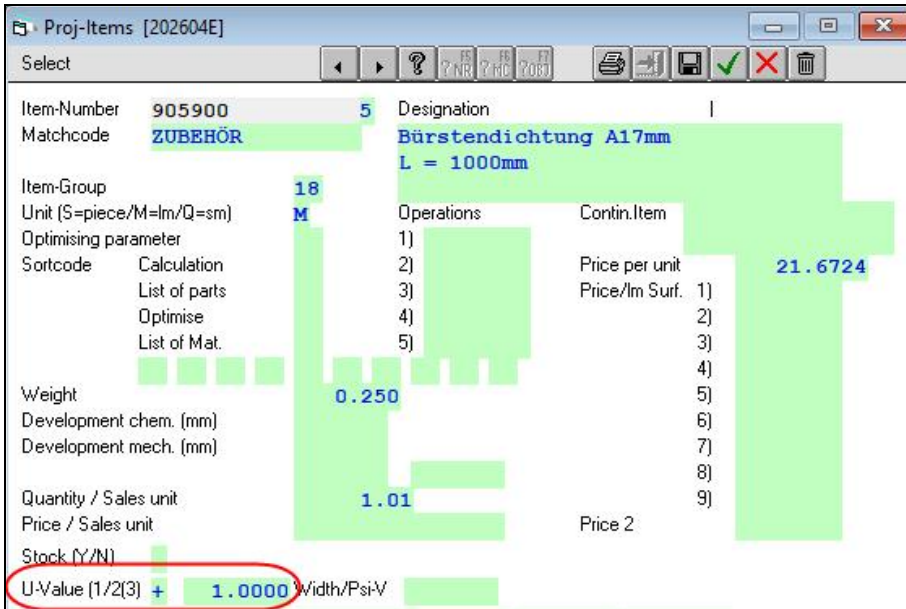
The program accesses MfSwert.txt.

The text file contains the contents of the Excel spreadsheet after having copied there via the clipboard.

You can also define adjustments in the item-database.

U-value field:
Code "+" or "-"

For example:
If item "905900" is present (regardless of quantity or length),
this improves the sound insulation value by 1.



4. General Information

- Identification of Data and Program Versions

Program-Version	26.2.1 8 474 296 Bytes 16.04.2026	Country	CH
Data-Version	07.04.2025 FORSTER Datenstand Mar 25 Preise 11/2023 (nur CH)	Project-directory	o\

The program version information is taken from the properties of the file map_m532.exe.

There is an item “_VER” that identifies the master data version.

Item-Number	_VER	9	Designation	
Matchcode			FORSTER Datenstand Mar 25 Preise 11/2023 (nur CH)	
Item-Group		79	Prog 25.2.1	

Line 1 = General master data version

Line 2 = Status of the price base

If an “_VERP” item exists, the price information is taken from this item.

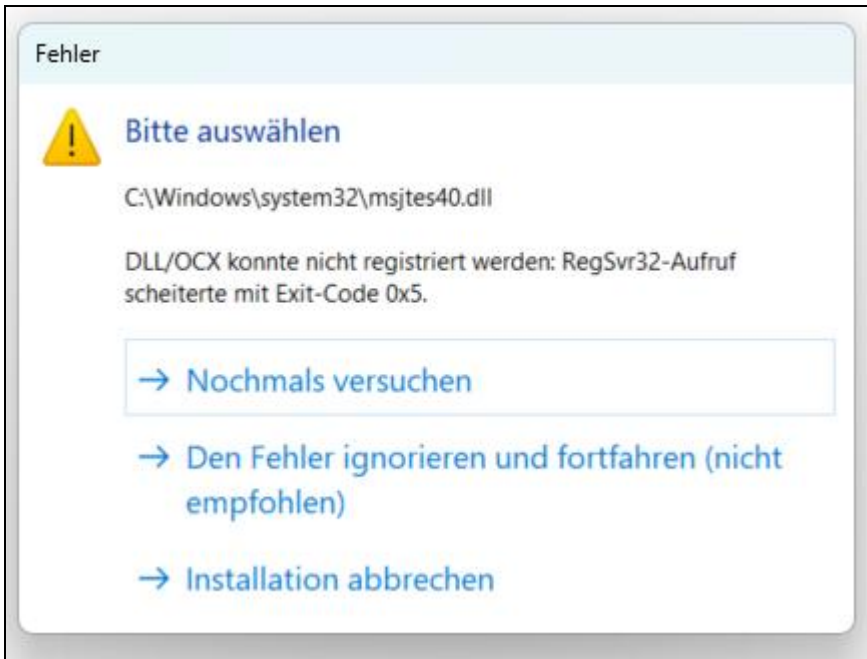
Line 3 = Minimum required program version for this master data status.

For example, with program version 25.1.3, any calculation (costing, AV, etc.) is terminated with the following error message.



- Setup Workstation

Since Windows 11 / 24H2, the following error message has occasionally appeared during setup.



Sometimes it works if you simply ignore the error and continue with the installation. But of course, that's not a permanent solution.

The problem has been fixed in the latest version of setup32.exe.

Download-Link:

- <https://www.mapdat.com/support/setup32.exe>
- User: mapuser
- Passwort: 0407